
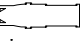


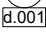
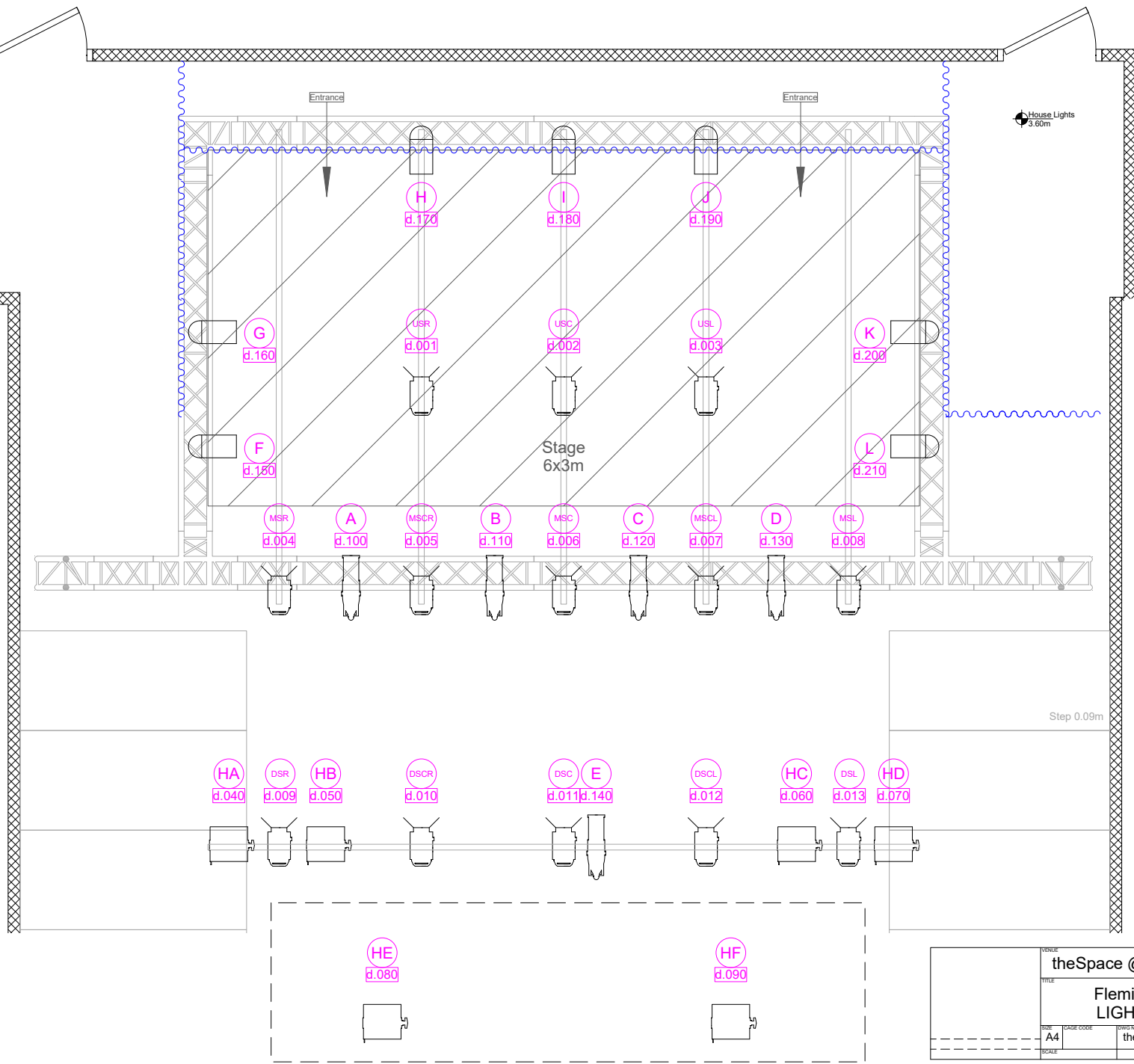
 ETC Colorsource Par
Mode: DIR (6ch)
 Briteq 100EC Fresnel
Mode: 1ch
 ETC Colorsource Spot
Mode: DIR (6ch)
 Showtec Chameleon Flood
Mode: 4ch
 SL
 DMX Address



theSpace @ Surgeons' Hall			
Fleming Theatre LIGHTING Plan			
SIZE	CADRE CODE	LOWU NO	REV
A4		theSpaceUK-VP-26-18	22.1
SCALE			SHEET