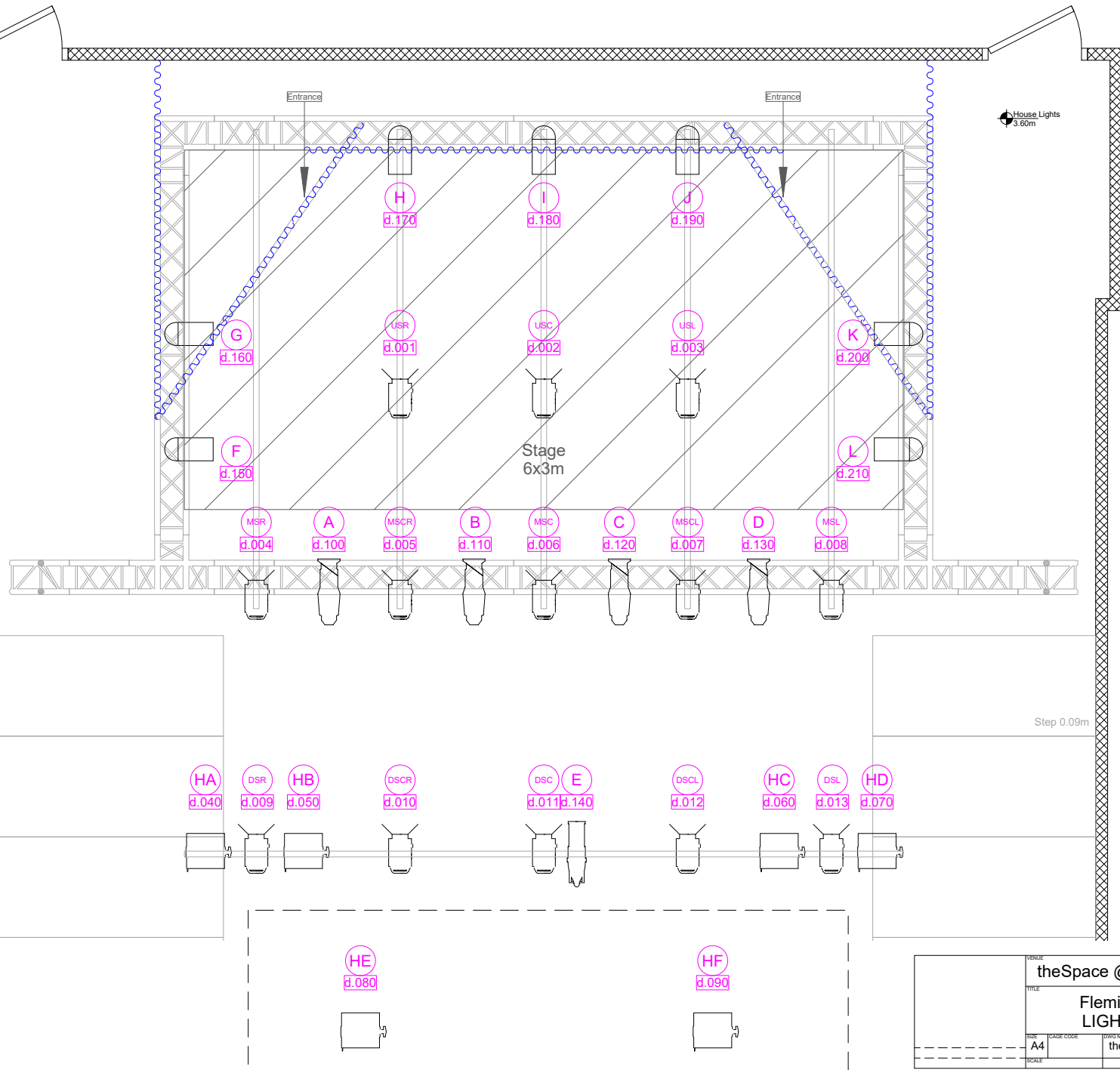


	Coloursource Par Mode: DIR (6ch)
	Briteq 100EC Fresnel Mode: 1ch
	Coloursource Spot Mode: DIR (6ch)
	Coloursource Zoom 25/50 Mode: DIR (6ch)
	Showtec Chameleon Flood Mode: 4ch
	Fixture Number DMX Address



theSpace @ Surgeons' Hall	
Fleming Theatre LIGHTING Plan	
SIZE	A4
CAGE CODE	
LOW NO	theSpaceUK-VP-26-18
REV	24.1
SCALE	
SHEET	